

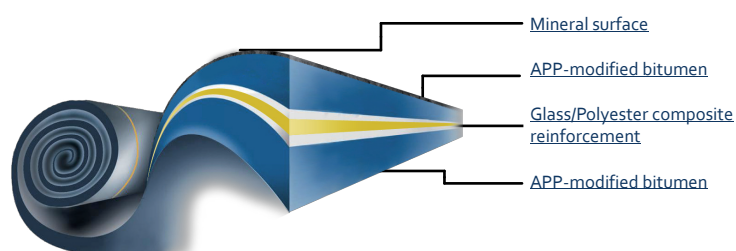
MASTERGOLD

MASTERGOLD MINERAL

HIGH PERFORMANCE ROOFING MEMBRANE

Mastergold Mineral is a high performance torch-applied bituminous roofing membrane comprising a glass/polyester reinforcement and APP modified compound. Mastergold Mineral is used as part of a multi-layer system designed to provide an upgrade in thermal performance, improve roof drainage and/or restore the water-tightness of the existing structure. It is equally suited to new build applications.

Mastergold Mineral offers high tensile strength, low temperature flexibility, even after aging, a high puncture resistance, and excellent dimensional stability. The standard black mineral finish provides protection against UV degradation.



Application

Mastergold Mineral can be applied in a variety of applications in both new construction and refurbishment:

- Fully bonded by torching in a built-up roofing system.
- Fully bonded by torching in a two-layer overlay system.

Benefits

- An expected lifespan in excess of 25 years.
- Torch-on method of application provides an excellent bond to the substrate and optimum lap security for high wind uplift resistance.
- High dimensional stability: the unique properties of the composite stabilized glass/polyester reinforcement ensure that shrinkage is negated.
- A selection of compatible base layers including Mastergold Underlay are available depending on specification.

- Competitively priced in relation to the high performance qualities.
- 10 Years comprehensive insurance-backed guarantee (material plus labour) available through Allianz.
- Low maintenance with only simple annual inspection/normal roofing practice guidelines required.

Product Certification

The Mastergold family of products have a proven track record in various countries throughout Northern Europe and have therefore achieved several approvals including SGS & BSB Environmental Certification (The Netherlands), BBA (United Kingdom), MFPA (Germany), ETA (Denmark).

MASTERGOLD

MASTERGOLD

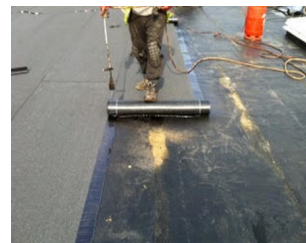
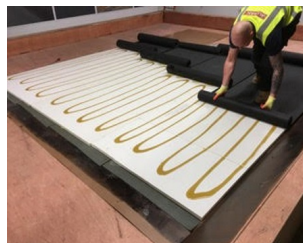
MASTERGOLD MINERAL

HIGH PERFORMANCE ROOFING MEMBRANE

Performance

Mastergold Mineral is supplied as standard in black mineral although alternative colours are available on request (subject to minimum quantity orders).

	Unit	Mastergold Mineral
Thickness	mm ($\pm 0,2$)	4
Width	m (± 0.02)	1
Length	m ($\pm 0,02$)	7.5
Surface	m ²	7.5
Weight kg $\pm 0,2$		38.25
Rolls per pallet	Number	25
<i>Reinforcement</i>		
Glass/polyester composite	g/m ² ($\pm 10\%$)	>150
<i>Cold bending</i>		
Absence of cracks cylinder \varnothing 30 mm-180° - 5 sec	°C	< -15
<i>Tensile</i>		
Longitudinal	N	>750
Transversal	N	>500
<i>Elongation at break</i>		
Longitudinal	%	>40
Transversal	%	>40
<i>Tear resistance</i>		
Longitudinal	N	>150
Transversal	N	>150



IIGO SRL

Strada di Pietrara 54a
05100 Terni (TR)
Italy
www.iigo.eu

MASTERGOLD