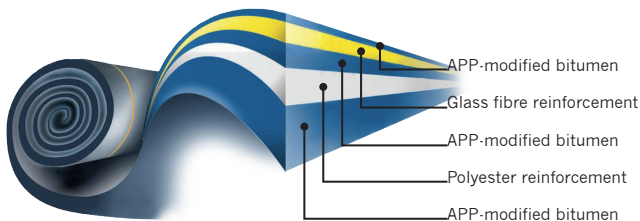


BIIG® REGULAR 446K14

DUAL REINFORCED ROOFING MEMBRANE

BIIG® is a high performance APP modified bitumen roofing membrane with a double reinforcement of glass fibre and non-woven polyester fleece. BIIG® combines a high softening point with low temperature flexibility. The placement of the glass fibre at the top of the membrane ensures maximum UV resistance, makes the membrane dimensionally stable, and provides a high puncture resistance. BIIG® has excellent fire resistance and achieves the standards in accordance with NEN6063 and EN1187 (1 + 2 + 4).



Applications

BIIG® Regular can be successfully applied in a variety of applications in both new construction and refurbishment:

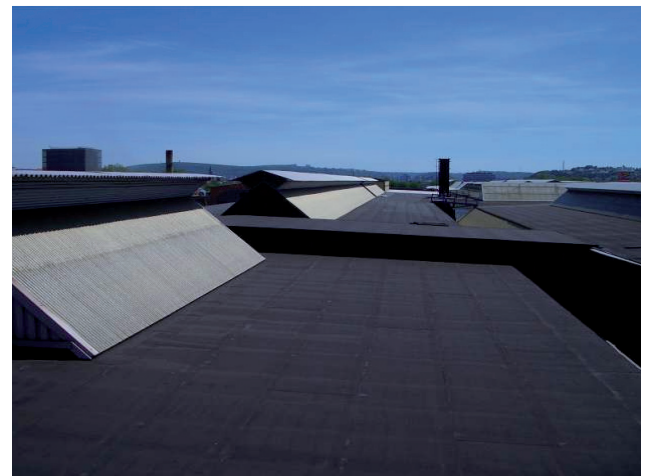
- » Loose-laid / ballasted
- » Partially bonded / adhered *
- » Fully bonded / adhered *
- » Mechanically attached

** Using the specially developed IIGO BIIG® TACK bituminous cold adhesive.*

The products can be applied by "The Roofers", a network of selected BIIG® approved roofing contractors.

Benefits

- » An expected lifespan in excess of 30 years.
- » Extreme resistance to the aging process: the inorganic glass fibre placed at the top of the membrane acts as barrier to UV rays.
- » Absolute dimensional stability: the glass fibre and polyester fleece reinforcement ensures that shrinkage and alligatoring are excluded.
- » Resistance to damage: the double reinforcement in



- the BIIG® membrane provides additional protection during application, foot traffic and following trades, and under extreme weather conditions such as hail.
- » Competitively priced in relation to the high performance qualities.
- » Excellent fire resistance.
- » 10 Years comprehensive insurance-backed guarantee (material plus labour) available through Allianz.
- » Virtually maintenance free with only a simple annual inspection/normal roofing practice guidelines required.

Product Certification

BIIG® has a proven track record in various countries throughout Northern Europe and has therefore achieved several approvals including KOMO / KIWA & BSB Environmental Certification (The Netherlands), BBA (United Kingdom), MFPA (Germany), ETA (Denmark), SP/SITAC (Sweden).

Partner in sustainable roofs



BIIG® REGULAR 446K14

DUAL REINFORCED ROOFING MEMBRANE

Performance

BIIG® is available in two thicknesses, 4mm and 5mm, whether in Regular or HP versions (HP: High Performance).

The HP version comprises an extra strong polyester fleece in addition to the aforementioned characteristics.

BIIG® HP is therefore ideally suited for use in parking decks, tunnels, bridges and underground car parks.

Applications

- » Suitable for new build and refurbishment
- » Applicable to most standard substrates and insulation types and can also be used on inverted roofs
- » Applicable as one or two-layer systems

| | Unit | BIIG 4 | BIIG 4 HP | BIIG 5 | BIIG 5 HP |
|--|-------------|--------|-----------|--------|-----------|
| Thickness | mm (±0,2) | 4 | 4 | 5 | 5 |
| Width | m (±0.02) | 1,10 | 1,10 | 1,10 | 1,10 |
| Length | m (±0,02) | 7,27 | 7,27 | 7,27 | 7,27 |
| Surface | m2 | 8 | 8 | 8 | 8 |
| Weight | kg ±0,2 | 35 | 36 | 45 | 46 |
| Rolls per pallet | Number | 25 | 25 | 23 | 23 |
| Reinforcements | | | | | |
| Polyester Fleece | g/m2 (±10%) | 150 | 250 | 150 | 250 |
| Glass Fibre | g/m2 (±10%) | 55 | 55 | 55 | 55 |
| Cold bending | | | | | |
| Absence of cracks on cylinder Ø 30 mm·180 ° · 5 sec | °C | < -20 | < -20 | < -20 | < -20 |
| Tensile | | | | | |
| Longitudinal | N | >675 | >1150 | >675 | >1150 |
| Transversal | N | >650 | >1150 | >650 | >1150 |
| Elongation at break | | | | | |
| Longitudinal | % | >50 | >55 | >50 | >55 |
| Transversal | % | >50 | >55 | >50 | >55 |
| Tear Resistance | | | | | |
| Longitudinal | N | >200 | >250 | >200 | >250 |
| Transversal | N | >200 | >250 | >200 | >250 |

IIGO SRL

Strada di Pietrara 54a
05100 Terni (TR)
Italia

Partner in sustainable roofs

